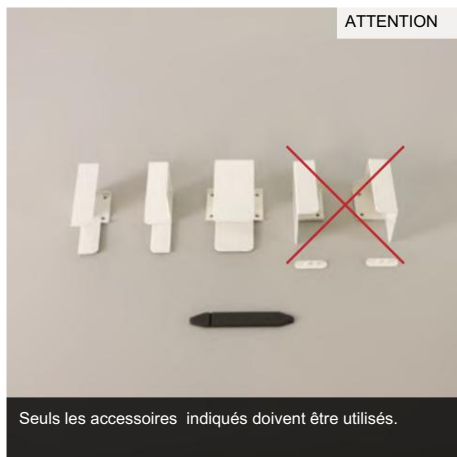


Notice de pose MP46

# NEOSCENICA®

P3 Pose face sur fenêtre – 2 vantaux

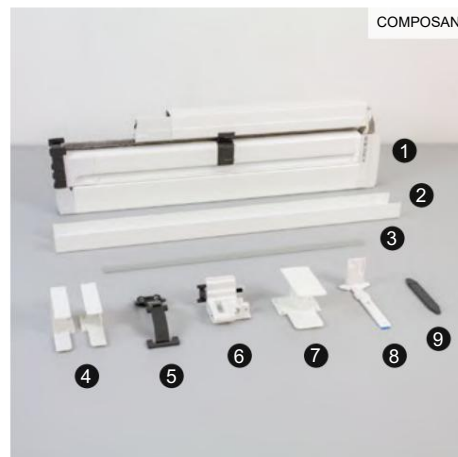
ATTENTION



## LISTE

- 1 MP46
- 2 Profil compensateur x 2
- 3 Seuil extra plat (option)
- 4 supports de fixation (paire)
- 5 Ressort de poussée x2
- 6 Groupe de pression x2
- 7 Pièce de jonction
- 8 Support coffre x 2
- 9 Plaque de sol

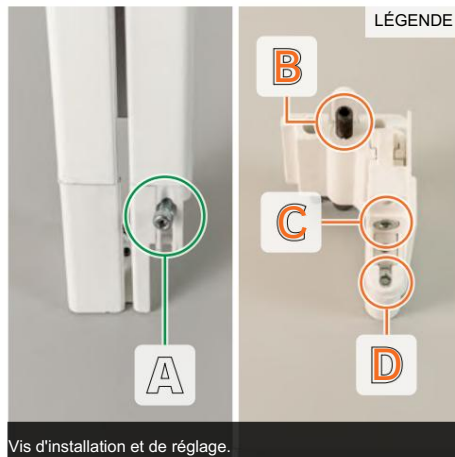
COMPOSANTS



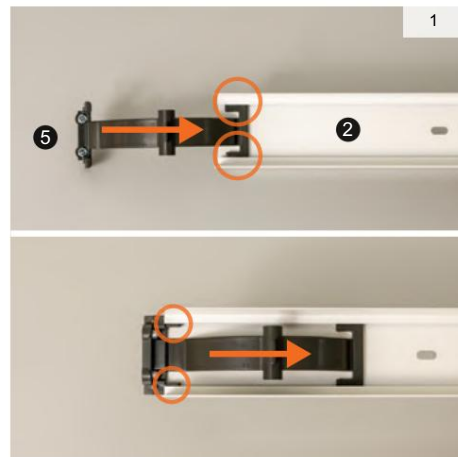
OUTILS



LÉGENDE



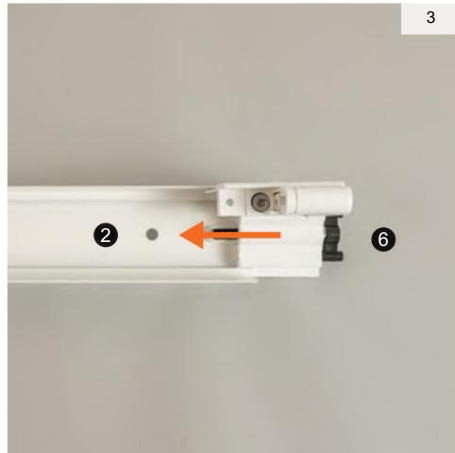
1



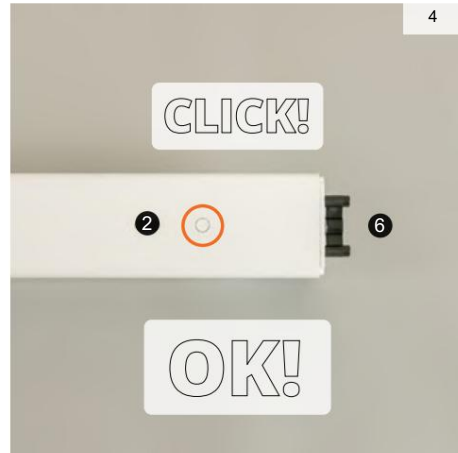
2

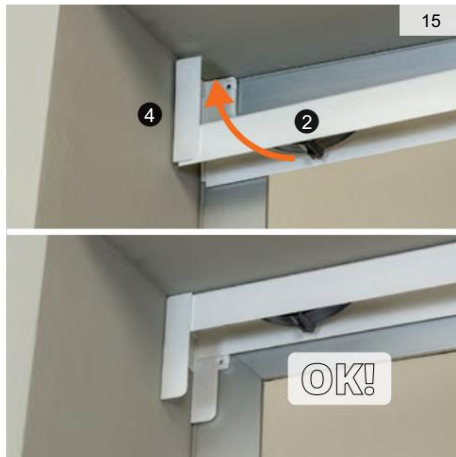
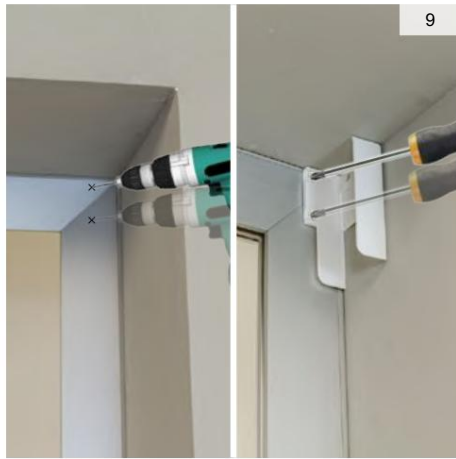
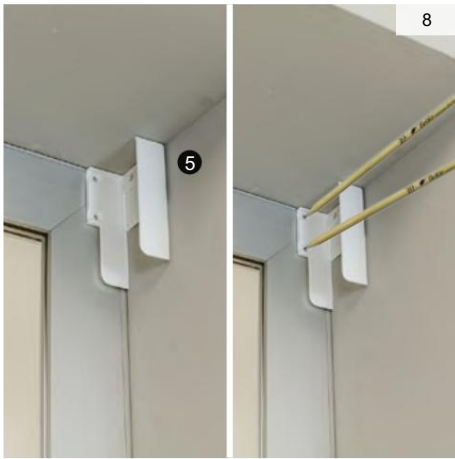
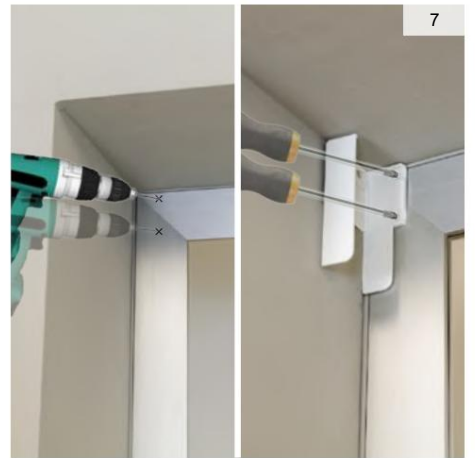
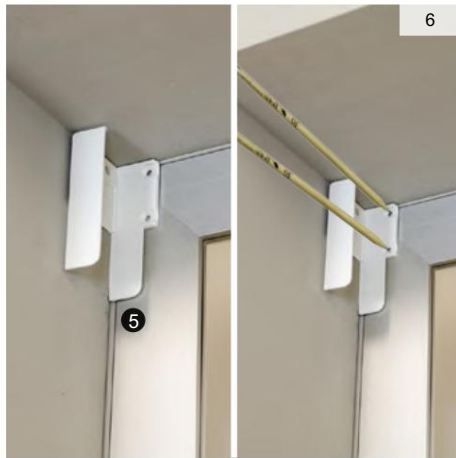
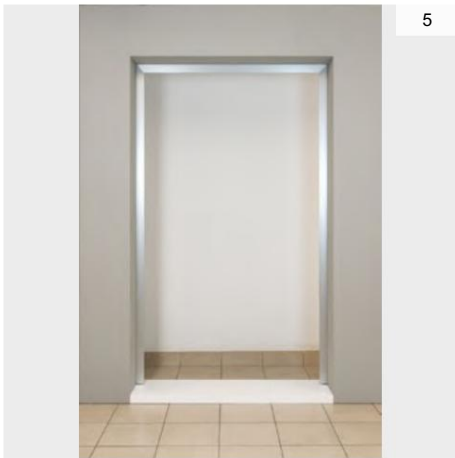


3

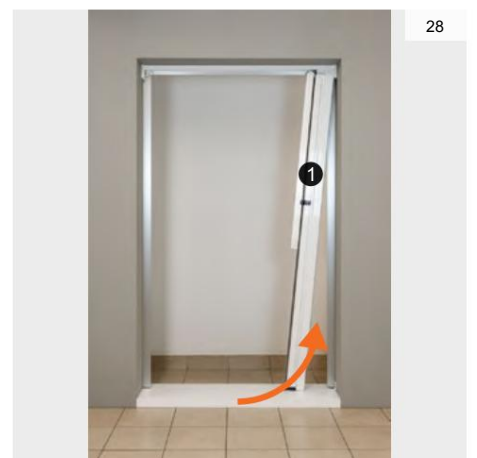
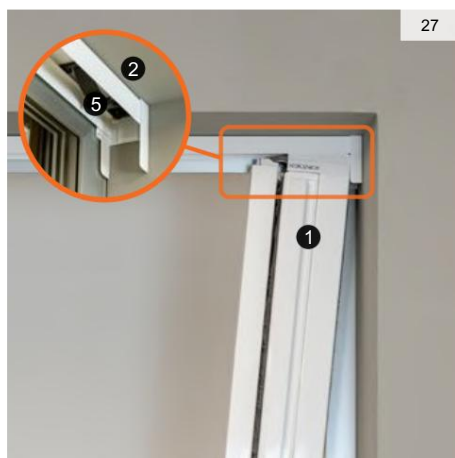
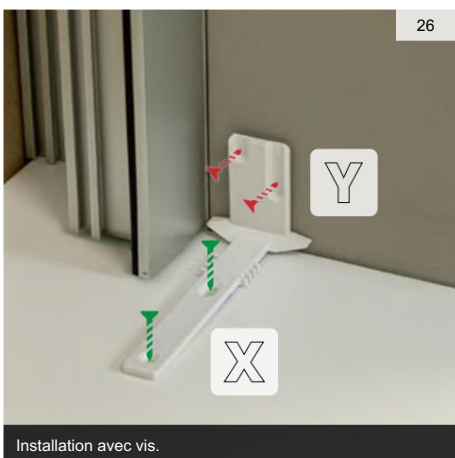
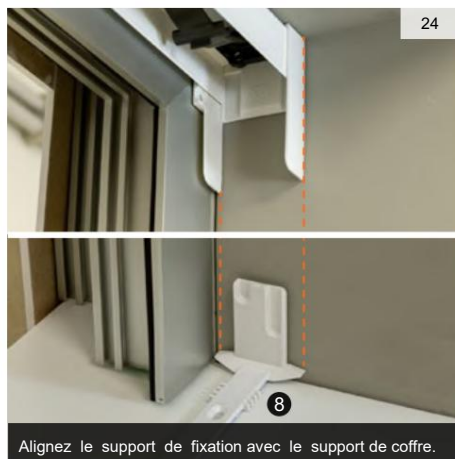
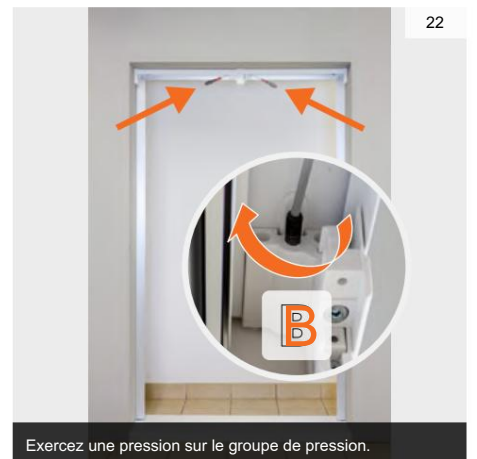
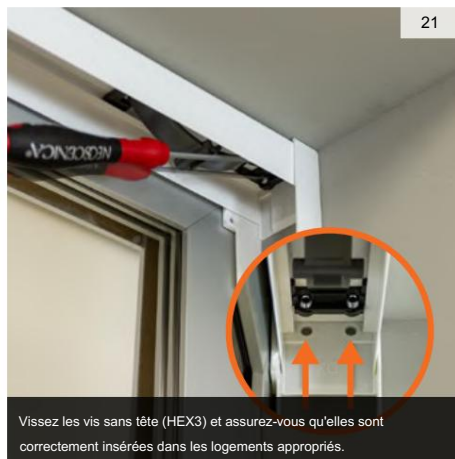
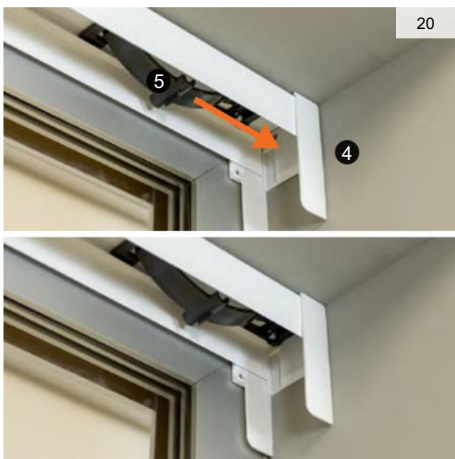
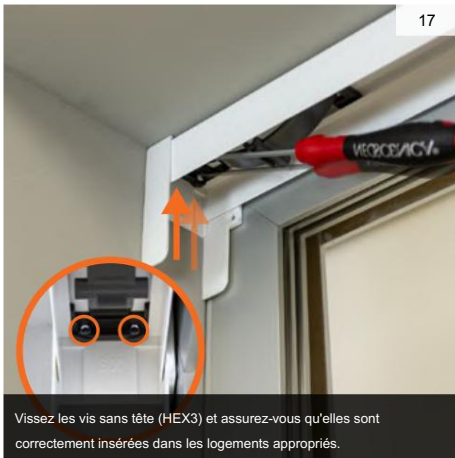


4

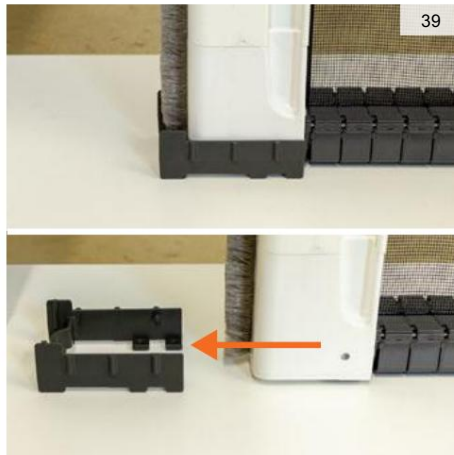
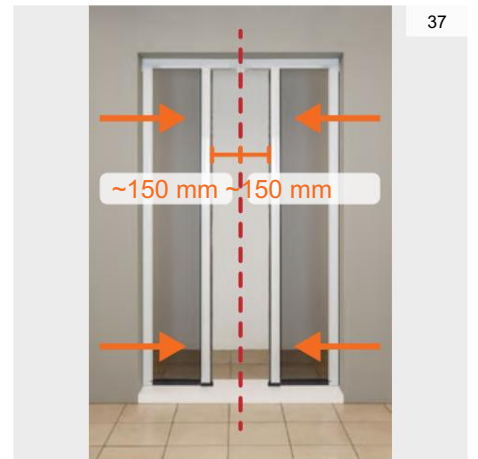
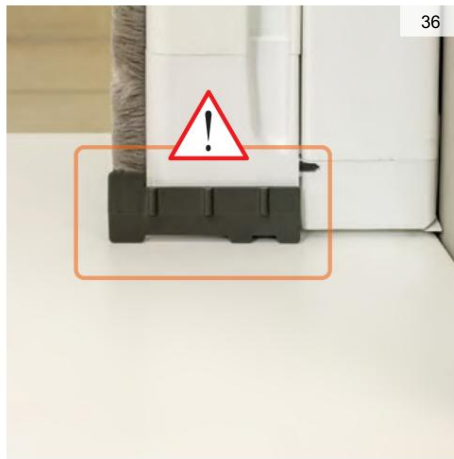
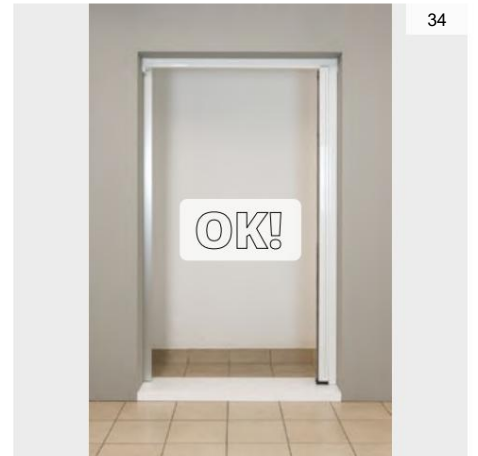
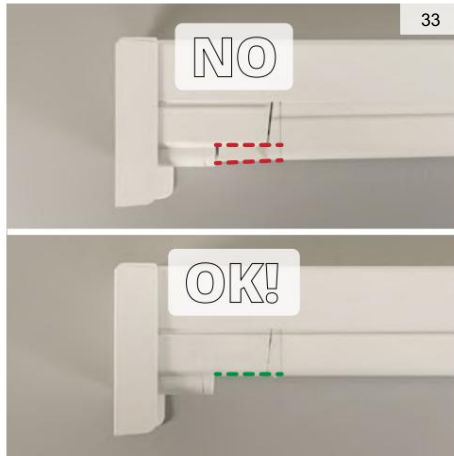
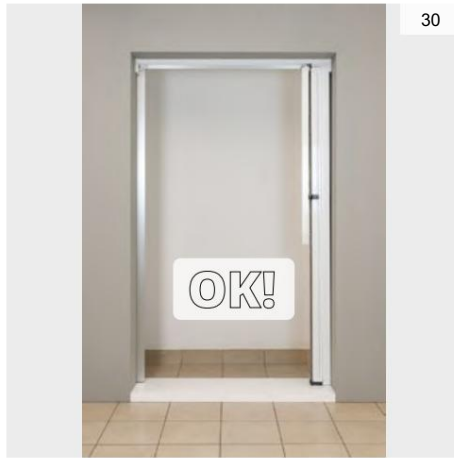
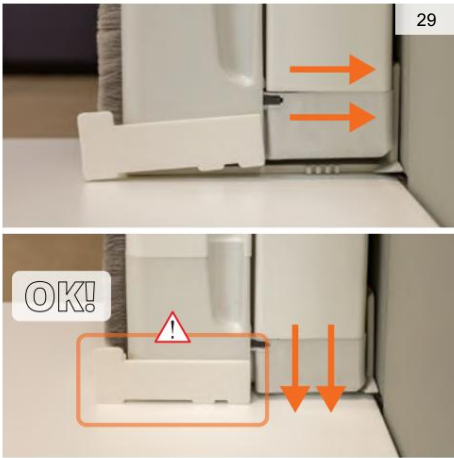


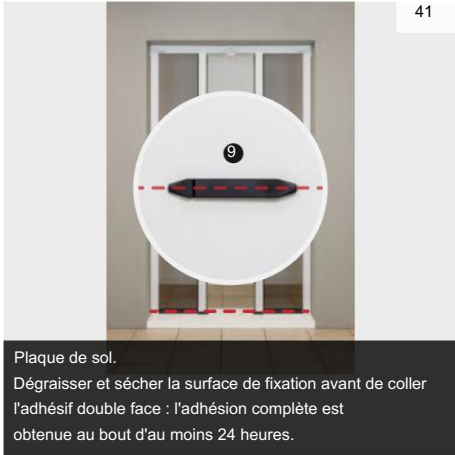


Assurez-vous que les broches poussoirs sont correctement insérées dans leurs logements.









41

Plaque de sol.  
 Dégraisser et sécher la surface de fixation avant de coller l'adhésif double face : l'adhésion complète est obtenue au bout d'au moins 24 heures.



42

Seuil extra plat (option) Conseillé à partir d'une lg de 1200mm.



43

Dégraisser et sécher la surface de fixation avant de coller l'adhésif double face : l'adhésion complète est obtenue au bout d'au moins 24 heures.



### ENTRETIEN

Aspirer délicatement la toile et les parties exposées à la poussière comme le chenillard.



### NETTOYAGE

Nettoyer avec une lingette humide à solution neutre.

